

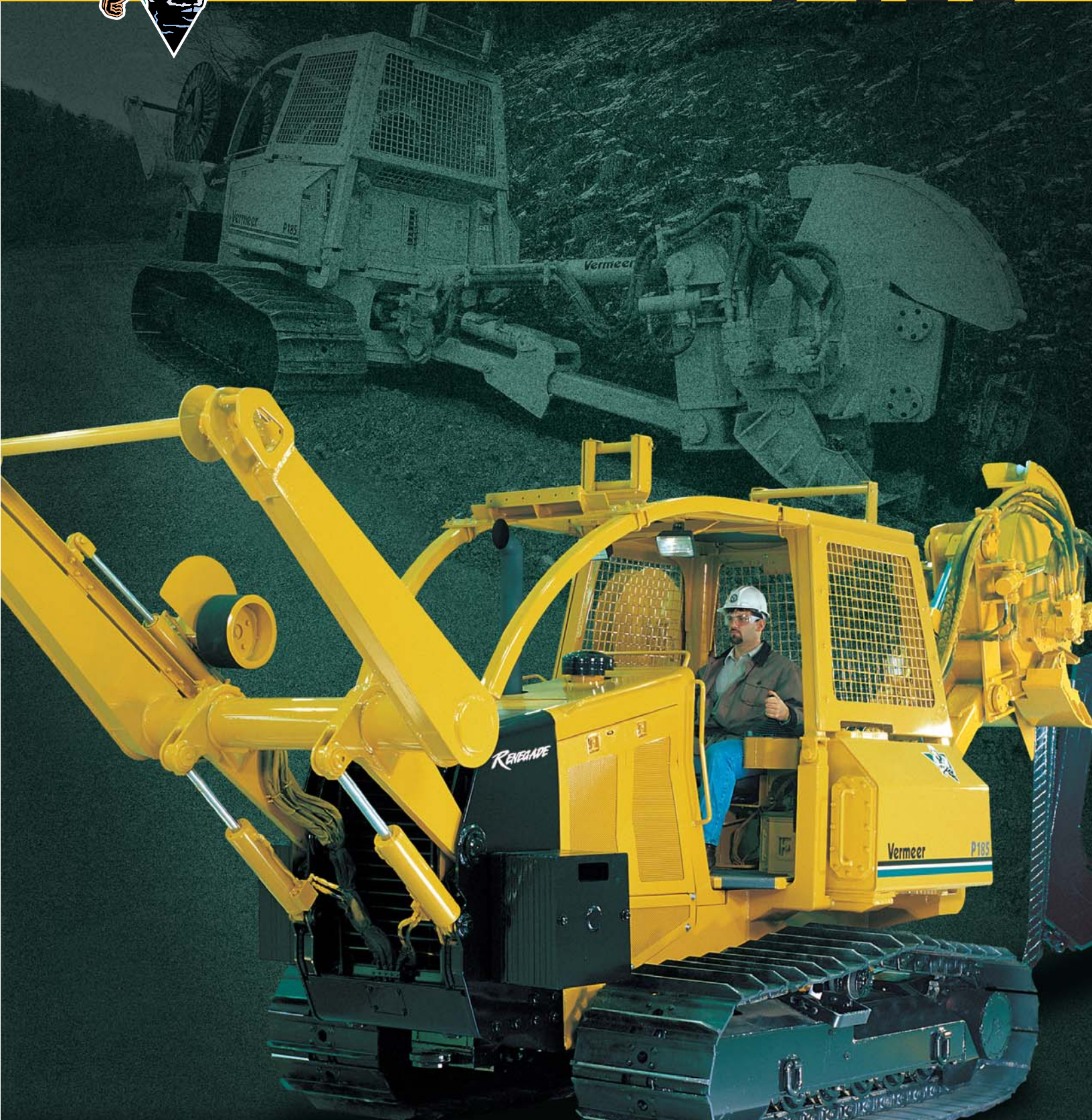
**VIBRATORY
PLOW**

Vermeer



RENEGADE[™]

P185



RENEGADE™

P185

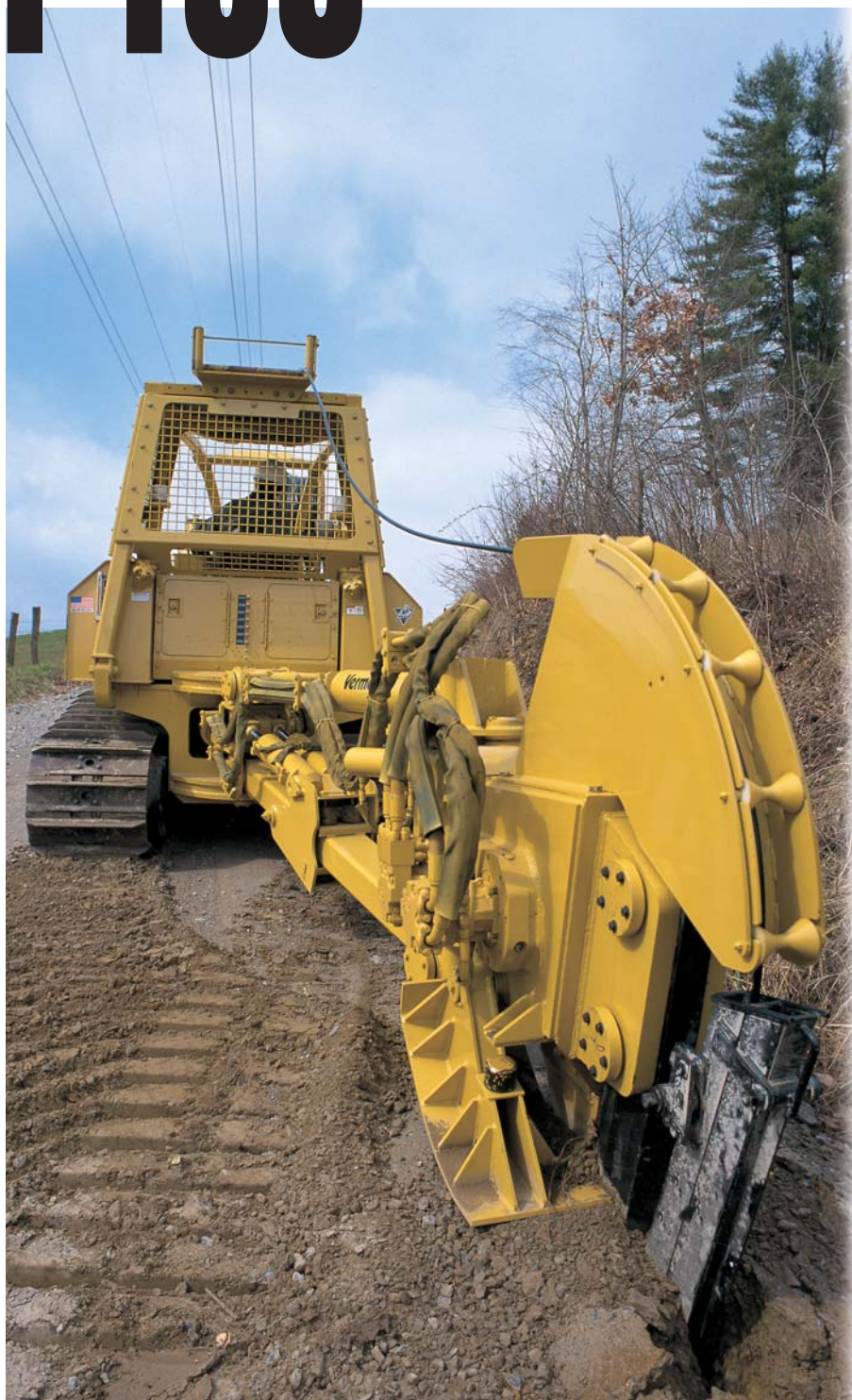
**VIBRATORY
PLOW**

Speed and power in a maneuverable machine

Make short work of long-distance plowing applications with the P185 RENEGADE™, a rebel built to be fast and powerful, yet more maneuverable than competitive models. The P185 combines the force of a 185 HP (138 kw) John Deere diesel engine with special features like variable ground speed in both directions and a hydraulically adjustable blade rake to help you work more productively.

Rumbling with 50,000 pounds (22,680 kg) of shaker force, the P185 delivers consistent performance — even in sloppy, watery conditions. It's the ideal machine for fiber-optic installation or for jobs demanding long installations and depths of up to 60" (152 cm).

A machine's performance doesn't just depend on power, it also relies on ease of operation. The P185 offers maximum operator convenience with a rotating seat and operator platform that provide better visibility and allow the operator to rotate 45 degrees.



Unequaled Plowing Performance



Fast, powerful performance

This RENEGADE combines the force of a 185 HP (138 kw) John Deere diesel engine with special features that enable you to work fast and efficiently.



Enhanced productivity

A microprocessor control monitors operating conditions and informs the operator of real-time machine performance for increased productivity. It also monitors straight tracking.



Convenient operation

Dozer-like joystick controls respond to your every command.

P185 Primary Specifications

General

Approximate weight:

Tractor, RC7500 reel carrier and P2185 plow:

33,500 lbs. (15,196 kg) w/weight kit;

31,000 lbs. (14,062 kg) w/o weight kit

Length: Tractor only — 150" (381 cm)

Tractor, RC7500 reel carrier and P2185 plow
— 396" (1005 cm)

Width: Standard — 94" (239 cm)

LGP — 98" (249 cm)

Height: 112" (284 cm)

Ground clearance: 14" (36 cm)

Ground pressure: Standard — 5.32 psi (36.68 kPa)

LGP — 4.94 psi (34.06 kPa)

Hydraulic System

Implement:

Type: Pressure and flow compensated
(load sensing)

Oil tank capacity: 75 gal. (284 L)

Oil type: Vermeer® HyPower 68

Ground drive:

Type: Dual-path hydrostatic drive with planetary
transmission capable of full counterrotation
(one pump and one motor per track)

Pumps: Sundstrand 90 Series

Motors: Sundstrand 51 Series bent axis motors

Planetaries: L & S planetary drives

Ground speed: 0 – 5 mph (0 – 8 kmph)

infinite variability

Service brakes: Hydrostatic

Park brake: Spring-applied, hydraulic-release

Pressure filtration: Exceeds 10 microns

Plow System:

Type: Closed-loop hydrostatic single pump,
dual-motor drive

Speed control: Infinitely variable speed with
manual control

Pressure filtration: Exceeds 10 microns

Engine

Model: John Deere 6068T

Aspiration: Turbocharged and aftercooled

Number of cylinders: 6

Gross horsepower: 185 HP (138 kw) at 2400 RPM

Cooling medium: Liquid

Air cleaner: Dry type with primary and secondary
elements and restriction indicator

Oil filter: Full flow

Electrical system: 12-volt

Fuel tank capacity: 75 gal. (284 L)

Fuel consumption at full load: 10.2 gph (38.6 Lph)

Operating range: 10 hours at 75 percent duty cycle

Options

Backfill blade Tape reel

Brush screens Towing package

Dual reel carrier Vantage Track

Reel tender Weight kit

Rubber pads



VANTAGE TRACK

Protect your trencher with our optional three-year/3,000-hour Extended Care Service Program — a Vermeer exclusive! Ask your dealer about it.

Worldwide Coverage With A Local Touch

Your Vermeer dealer is independent and authorized to be a Vermeer specialist who knows your local conditions and is ready to provide expert support, service and parts, wherever your job site.



Vermeer Manufacturing Company

P.O. Box 200
Pella, Iowa 50219 U.S.A.
Phone: (515) 628-3141
Fax: (515) 621-7734

Europe, Middle East and Africa Inquiries:

Vermeer International

P.O. Box 323
4460 AS Goes
Netherlands
Phone: +31 113 272700
Fax: +31 113 272727

For more information, call:

1-888-VERMEER

1-888-837-6337 (U.S.A. only)

International fax: +1 (515) 621-7730

www.vermeer.com